

# Technical rider for SAMBA

## ABOUT SAMBA

Duration approximately 60 min.

The performance makes use of:

- Suspension bridge
- Red dancefloor Ø 8m
- Hay, clay/mud and water used during the show

Max. performances a day: 2

## TO BE PROVIDED BY THE VENUE

### Stage

- Minimum stage measurements: W 15m, D 15m, H 6m.
- Complete theatrical black out
- Black dancefloor
- Extra risers in case of more than 60 audiences
- Stage has to be cleaned before get-in
- Dressing room with shower and toilet. 5 clean towels
- 5 liters bottled water.
- Coffee, fruit and sandwiches for get-in and get-out

### Bridge rigging

- 2 groups of 4 x 3.5T rigging points. 1 group in stage left and 1 in stage right with a distance of minimum 12 meters and maximum 15 meters be. 2 Points in each group 3m height and 2 points in 4m height with a distance of 1m between each point. See attached drawing.
- If there is no rigging points within reach, we accept truss type Milos S-M530 or equal as long as it is safely fixed in top and floor. <https://www.milosystems.com/getmedia/7b731fc1-d5b3-4c9c-a196-74df9a8542ae/S-M530-Quatro.pdf.aspx?ext=.pdf>
- All rigging must be discussed and approved by Uppercut's technician.

### Light

- 1 2kW Fresnel
- 4 CE Source 4 Jr – 25/50 Zoom
- 2 CE Source 4 25/50 Zoom
- 13 1kW Fresnel
- 3 Colorado 2 Quad Zoom Tour
- 35 PAR 64 (CP62)
- 23 Bulb strip w/ 1 bulb (provided by company)
- 1 Hazer
- 1 Smoke machine (provided by company)

All lights except Bulb strip and smoke machine to be provided by venue.

The performance is run by Uppercut technician on Uppercut sound and light desks.

## Sound

- PA system consisting of 4 suitable speakers and subs.
- L/R to mixer

## Planning and staff

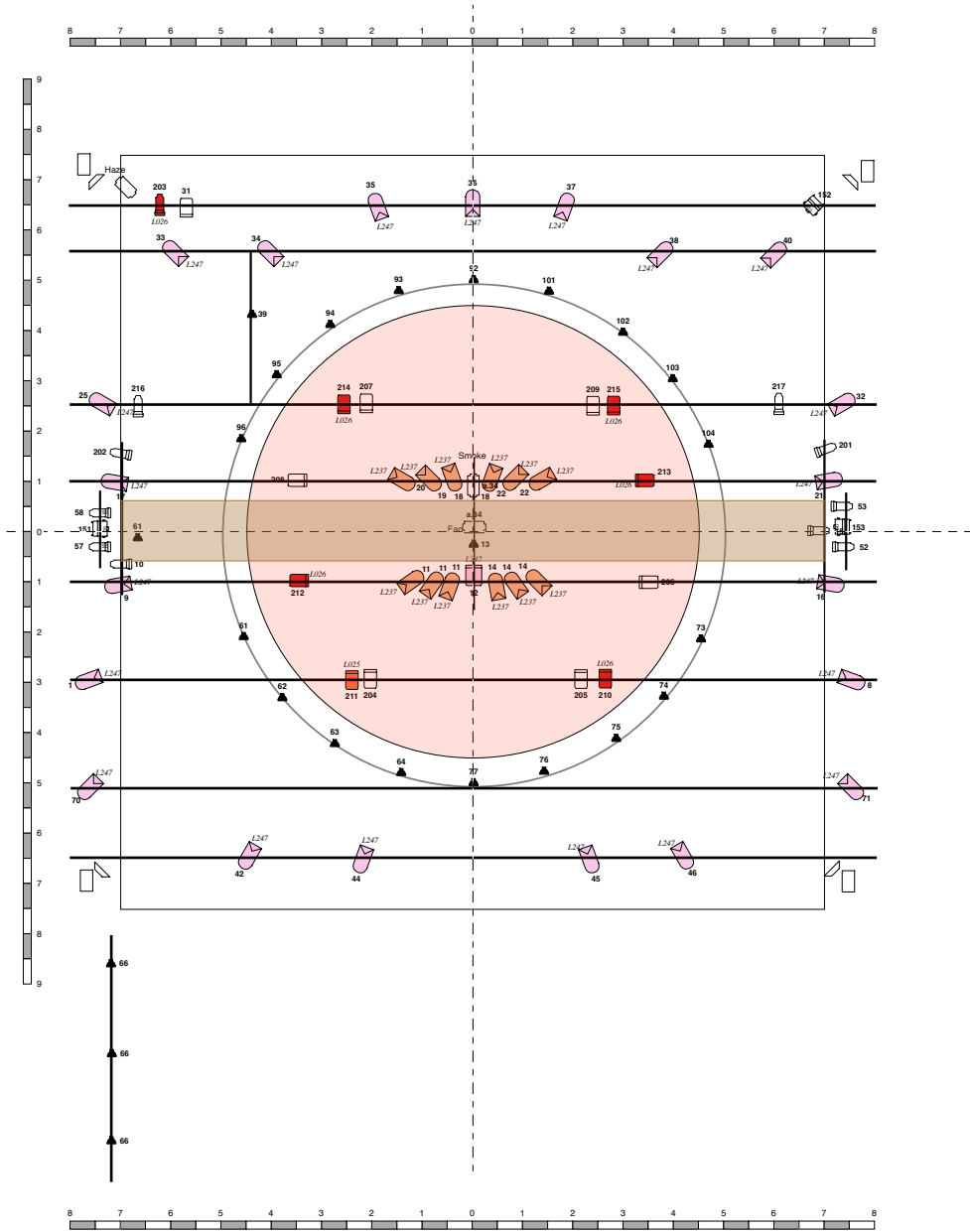
- No later than 3 weeks before the show rider is confirmed and any change of equipment is arranged with Uppercut technician
- Uppercut get-in 1 day before performance day
- Floor cleaned without soap by venue 90 minutes before each performance
- 4 buckets and minimum 10 cloths available for cleaning the stage after each performance
- 5 hours get-out
- Venue provides 2 stage hands and 1 technician for get-in and get-out. + 2 riggers for suspension bridge
- Access to washing machine and dryer

## Contact company:

Administrator Pia Thomasen  
+45 4054 3691  
info@uppercutdanseteater.dk

Producer Maja Bonde Holtze  
+45 2120 0581  
prod@uppercutdanseteater.dk





| Symbol | Name                      | Count | Symbol | Name       | Count |
|--------|---------------------------|-------|--------|------------|-------|
|        | PAR 64 CP62               | 35    |        | Speaker    | 4     |
|        | 1 kW Fresnel              | 13    |        | Sub Woofer | 4     |
|        | 2/2.5kW Fresnel           | 1     |        |            |       |
|        | CE Source4 jr. 25/50 Zoom | 4     |        |            |       |
|        | CE Source4 25/50 Zoom     | 6     |        |            |       |
|        | Bulb strip with 1 bulb    | 23    |        |            |       |
|        | Colorado 2 Quad Zoom Tour | 3     |        |            |       |

Truss example:



Placement of rigging points:

